

We are one

We are one humanity, all linked together on this Earth. Each of us deserves dignity, safety, and a chance to lead a healthy, productive life. At Heartland Alliance, we help others in many ways. In the end, though, we are one organization, focused on one goal: Giving those in need the opportunity to improve their lives.

one day

On any given day, you'll find Heartland Alliance working across Chicago, throughout the Midwest, and around the world. To help the most vulnerable among us, we operate many different programs: from housing to health care, employment training to legal protections. Heartland Alliance provides a comprehensive mix of services for our clients that allows them to move from crisis to stability to success.



8:00 AM | GETTING TO WORK

Shannon opens the kitchen at the family-owned Slab Restaurant on Chicago's South Side. A father of three, he's one of more than 27,000 unemployed workers who found a job last year through Put Illinois to Work. Created in partnership with the State of Illinois, Heartland Alliance designed, developed, and led the year-long program. In the end, more than 2,000 participants with unstable employment records were hired for permanent jobs because of the program. Vice President Joe Biden's chief economic officer called the results "nothing short of remarkable."



9:00 AM | EFFECTIVE AND EFFICIENT

Each year at Heartland Alliance, we ensure we're on track with an annual strategic plan that is reviewed and then evaluated by our board of directors. The proof it works: More than 90 cents of every dollar donated to Heartland Alliance goes directly to programs.



10:00 AM | SUPPORTING THOSE WITH HIV

Frank started to visit Vital Bridges Groceryland eight years ago because the food pantry tailors its groceries to match the unique medical and nutrition needs of those living with HIV. Now he volunteers three days a week, delivering free groceries and care to those too ill to come in themselves. This year, Heartland Alliance added Vital Bridges Center on Chronic Care to its mix of programs, providing half a million meals annually.

Heartland Alliance 2011 Annual Report



11:00 | MEDICAL CARE FOR ALL

At our Uptown health center and other Heartland Alliance facilities across the city, we provide medical care to the uninsured, homeless, immigrants, and others living in poverty. Nearly 20,000 patients came through our doors last year, getting careful attention for everything from dental services to mental health, from having a baby to a simple check-up.



Noon | ADVANCING POLICY

Heartland Alliance's president, Sid Mohn, co-chairs the Illinois Commission on the Elimination of Poverty, a state initiative that reached a milestone this year: publication of its blueprint for change, "Building a Pathway to Dignity and Work." The report calls for strengthening the state safety net, adding new employment supports, and ensuring that nobody who is working has to live in extreme poverty.



1:00 PM | HEALTHCARE IN SCHOOL

Students at Hibbard Elementary School became a lot less likely to miss class because they are sick, thanks to a brand new health center located right in the building. Like the high school-based health centers that Heartland Alliance runs, Hibbard's offers immunizations, regular check-ups, dental services, mental health counseling, and more.



2:00 PM | GETTING THE WORD OUT

As the ethnic news media project director at the Community Media Workshop, Stephen Franklin is always looking for ways to help reporters and editors at Chicago's more than 300 African-American, immigrant, and Latino media outlets. He says the data on poverty and other community issues that Heartland Alliance provides is an essential tool for his work.



3:00 PM | GROUNDBREAKING HOUSING FOR LGBT SENIORS

Affordable housing for seniors can be hard to find in Chicago, but a facility for lesbian, gay, bisexual, and transgender (LGBT) seniors has been nonexistent. This year, Heartland Alliance and the City of Chicago announced we will renovate a former police station in Chicago's Lakeview neighborhood to provide housing and services for LGBT seniors, a place where they are safe and comfortable and can expect acceptance and camaraderie.



4:00 PM | REBUILDING A COUNTRY

Ramsey Ben-Achour is out playing with the kids, part of our work to build community and protect youth through organized sports in Haiti's displaced persons camps. Ramsey, the director of our Haiti program, is one of 125 Heartland Alliance staff members in the country. We arrived almost immediately after the devastating earthquake in January 2010—and we're still here. Along with the work in the camps, our Haiti programs combat child trafficking and provide women with more protections and voice in society.

Heartland Alliance 2011 Annual Report



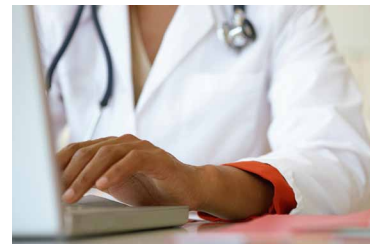
5:00 PM | A CASE MANAGER AND MORE

Erin Norton works with single moms and dads who are living in poverty and with HIV. Many of the families have been homeless, and as a case manager, she finds them a place to live, then helps connect them to services like job placement and medical care. But she also does much more. She helps young moms set financial and personal goals for themselves, plays with the kids, listens, and gives advice.



6:00 PM | RECOGNIZING DIGNITY AND STRENGTH

Everything we do at Heartland Alliance is based on a philosophy of care that promotes the dignity of our participants. Every member of our staff in all our programs build relationships with patience, understanding, knowledge, and an appreciation of the strength and capacity of the people with whom we work.



7:00 PM | AT THE FOREFRONT OF INFORMATION

We store all medical information of every patient seen by any Heartland Alliance doctor, dentist, or mental health specialist in our Electronic Health Record System. It helps lower mistakes, gives suggestions for patient care, and provides detailed reports on how well we are doing. For our medical professionals who serve patients in homeless shelters, it means better information at their fingertips.



8:00 PM | SAVING SMARTER

Adela works with her kids on their homework. She's confident that when they're ready for college, she'll be able to afford it because she joined 25 other parents who took a class to learn how to better manage their money. More than 750 Chicagoans have taken one of Heartland Alliance's financial education courses. Knowing how to budget and save smarter can keep the household afloat and out of poverty when times get tough.



9:00 PM | THE NEWEST AMERICANS

A Heartland Alliance staff member helps a new refugee adjust to an American supermarket. When the refugees who we help resettle arrive in Chicago, Heartland Alliance has an apartment waiting, furnished, and ready. In the weeks and months to come, we help with everything from connecting them to others in the community to how to ride public transportation.



10:00 PM | REWARDING RENOVATIONS

Mark is one of nearly 200 low-income seniors now living in Hollywood House, our award-winning affordable apartment building in Chicago's Edgewater neighborhood.

Heartland Alliance 2011 Annual Report



11:00 PM | SERVING KIDS

Staff clean up after cooking more than 500 meals today. Our Rogers Park kitchen serves our residential centers that house children who were detained by immigration officials, as well as two others that are an alternative to jail for 10- to 17-year-olds. They're kids who've been abandoned or are trying to turn their lives around, and our team makes sure that while they're in our care they have health care, counseling, legal representation, vocational training—and something good to eat.



Midnight | OUTREACH TO THE HOMELESS

Outreach teams from Heartland Alliance go to parks, shelters, libraries— anywhere homeless individuals can be found—to provide medical care, offer mental health services, and more. We go the extra mile to meet those experiencing homelessness in their environment with respect and understanding.



1:00 AM (9:00 AM LOCAL TIME) | AN INJUSTICE REVERSED

Doctoral student Sabri Samirah left the U.S. in 2002 to travel back to his native Jordan to visit his sick mother. He's been unable to return home ever since—the U.S. Department of Justice reversed its permission on his case when he was overseas. In December, the U.S. Court of Appeals found that he should not have been barred from returning. Heartland Alliance has been representing Sabri as part of our work to protect the rights of everyone in this country, even noncitizens, who follow the law.



2:00 AM | AN INSPIRING NATIONAL CAMPAIGN

spends the night in his new home. Homeless for more than 20 years, Herman met a member of the Heartland Alliance team as a part of the 100,000 Homes Campaign, a nationwide effort to house the most vulnerable homeless individuals in the country. One year later, he's clean, sober and has a new lease on life. With a roof over his head, he can now focus on attending to his health and maintaining his sobriety. "I didn't even know there was help like this," he says. "I thought there was no hope, but there is—I'm home."



3:00 AM (10:00 AM LOCAL TIME) | SUPPORT THAT GOES GLOBAL

Cathy Kezimana helps female former child soldiers in Burundi who are trying to put back together their lives. Cathy was chosen as one of eight exceptional women from around the world to join a Heartland Alliance fellowship program. With a grant and new insights from a three-day symposium, Cathy is now even better prepared to have an impact.



4:00 AM | A SAFE HAVEN FOR HOMELESS TEENS

At our Neon Street Dorms, teens like Danny have a place to live that's dedicated to their circumstances. More than 10,000 youth are alone and homeless in Chicago. Many don't feel safe in traditional shelters, and they have different needs than adults experiencing homelessness. Neon Street offers them specialized counseling, employment assistance, advice, and a sense of community.

Heartland Alliance 2011 Annual Report



5:00 AM | MANAGING DIABETES

Each morning, Louise starts with a walk on the treadmill. When she had an aneurysm a few years ago, the rehabilitation was made much harder by her diabetes. Our health program at a West Side senior living center helps her manage her condition by changing to a healthier diet, addressing stress, and exercising daily. Now she's feeling good and living medication-free.



6:00 AM | THE POWER OF VOLUNTEERS

Volunteers are woven into almost everything we do. They provide childcare for survivors of domestic violence, help lost or distraught travelers at O'Hare airport, and teach English to immigrants and refugees. Doctors volunteer at our health centers, and lawyers donate pro bono legal services. More than 1,700 volunteers donated service hours worth more than \$16 million this year to Heartland Alliance. We couldn't do our work without you, volunteers—thanks!

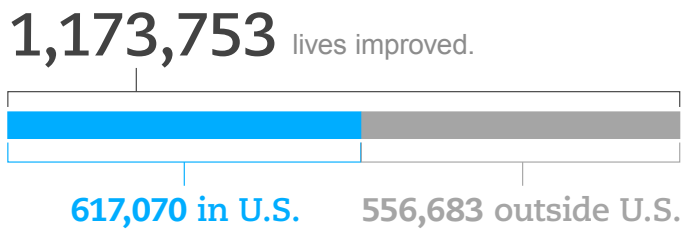


7:00 AM | A NEW ERA IN MILWAUKEE

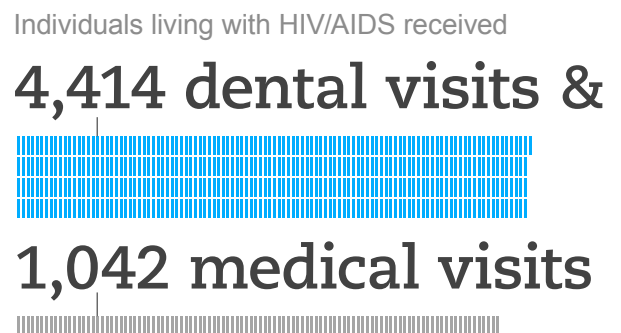
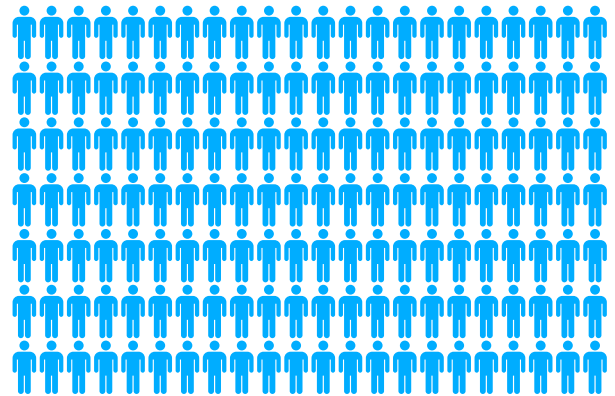
When the City of Milwaukee wanted to better serve local residents who've been chronically homeless and are dealing with mental illness, they turned to Heartland Alliance. Our latest project in Milwaukee is the new Capuchin Apartments, which offers 38 units of permanent affordable housing and on-site supportive services.

one year

For the first time, Heartland Alliance touched the lives of more than a million individuals in one year. Here are some of the highlights.



154 refugees



one passion

Heartland Alliance has more than 1,200 staff members, nearly 100 board members, 1,700 volunteers, and thousands of donors, all dedicated to helping the most vulnerable members of society.



"I'm an eternal optimist because every day I hear people talk about how their lives have changed. How they lived in despair and now they live in hope. How they had nothing and now they have a job and an apartment. That hope is contagious."

[HEARTLAND ALLIANCE PRESIDENT SID MOHAN](#)

To see the video with all of Sid's insight into the one passion we all share at Heartland Alliance, visit www.heartlandalliance.org/weareone.

one-by-one

We learn a lot every day at Heartland Alliance from the programs we run and the people we work with. We use those lessons to create innovative programs to help those who are in danger or poverty. One-by-one, policymakers and program managers are finding that when it comes to efficient, effective ideas, Heartland Alliance is an invaluable resource.



CHICAGO: A TRUSTED PARTNER IN HOUSING

Last year, Heartland Alliance was one of five partners on a team chosen by the Chicago Housing Authority for the complex redevelopment of the Julia C. Lathrop Homes on Chicago's North Side. The 37-acre site, currently one of the oldest public housing developments in the country, will be transformed into a new community of affordable and market-rate housing that integrates well with local schools, stores, jobs, and parks. It all will happen within the highest environmental standards and while providing support for the hundreds of families who currently live in the Lathrop Homes.

Heartland Alliance has experience in helping families transition out of public housing as well as a background in green building. Our Prairie Apartments affordable housing project in Milwaukee has been certified by an international green building rating system as highly sustainable. That kind of familiarity makes a difference when the city is looking for a partner—our experience was one reason why we were Chicago's choice to create new affordable housing focused on Lesbian, Gay, Bisexual and Transgender (LGBT) seniors.

The New Viceroy

Next year, we'll begin work on a new project with the City of Chicago, rehabbing the Viceroy Hotel on the Near West Side to become permanent supportive housing for 89 residents who have been formerly incarcerated, experienced homelessness, have lost their homes, or are otherwise in need of help. The project will require experience in mixing housing with services and in historic preservation. The City of Chicago knows that, for those issues too, Heartland Alliance is the experienced choice.



ILLINOIS: A BETTER MODEL FOR HEALTHCARE

Illinois has some big decisions to make. The new federal health care law provides access to Medicaid for more than 700,000 state residents in 2014, and half of those in the program must be moved to coordinated care. It means many more low-income adults will now have health insurance, but for a cash-strapped state, it will require some fundamental new ways of providing health care.

Better Healthcare Outcomes

At Heartland Alliance, we serve some of the most vulnerable people in Chicago with complex medical issues—those experiencing homelessness, those with mental illness, desperately poor people living with chronic medical issues. And yet we regularly achieve better health care outcomes for these populations, and we keep our participants out of the costly cycle of emergency rooms and hospital care. Managed care cuts costs by cutting medical care. Heartland Alliance finds its savings from coordinating services, preventing bad health outcomes, and lifting people out of poverty.

It's an approach that has been highlighted by the U.S. Department of Health and Human Services as a model program. And so the state has looked to Heartland Alliance for insight into how to handle technical issues from setting reimbursement rates to linking Medicaid with supportive housing. Health care for the poor is starting to improve in Illinois, and Heartland Alliance is helping to lead the way.

Heartland Alliance 2011 Annual Report



NATIONAL: LEADING THE WAY ON EMPLOYMENT

This year was the culmination of years of hard work by the National Transitional Jobs Network, a program of Heartland Alliance. The network of more than 4,000 groups nationwide is the leading organization for policy analysis, advocacy, and guidance on employment programs for disadvantaged workers.

For years, the network has been calling for increased support from the federal government for transitional jobs: temporary, real work that is coupled with skill development and supportive services for workers with barriers to employment, such as disconnected youth and people who have been incarcerated. Heartland Alliance and other nonprofits around the country have operated programs that have consistently shown that this innovative model works and deserves the resources to meet the demand.

Taking the Model to Scale

The network was ready with years of examples of real-world success and connections to the right policymakers as the Obama administration was looking for ideas to combat the rising unemployment rate. Groundbreaking federal initiatives by the U.S. Department of Labor and the Department of Human Services are now underway for transitional jobs, including dedicated funding for programs and further innovation.

This new federal support will allow thousands more individuals across the country to have access to transitional jobs and subsidized employment opportunities in the years to come. It's a testament to the network's strength as a national coalition, respect as a resource, and influence in the field.



INTERNATIONAL: LGBT RIGHTS AND PROTECTION

Heartland Alliance has a long history supporting lesbian, gay, bisexual, and transgender people (LGBT) in a number of regions, and our work is always framed to work within local contexts. That background has helped us become a leader in the high-priority needs of LGBT people facing danger around the world.

Advocacy, Training, and Leadership

In Burundi, Nigeria and Ghana for instance, Heartland Alliance frames discussions about sexual orientation and gender identity in terms of human rights and stigma, paving the way for LGBT groups to work with other organizations to stem legal, social, and religious discrimination.

We've worked with the United Nations High Commission for Refugees in countries like Lebanon and Jordan to train relief workers on how to ensure the security of LGBT refugees, and held conferences on the issue that informed policy for the U.N. and U.S. agencies.

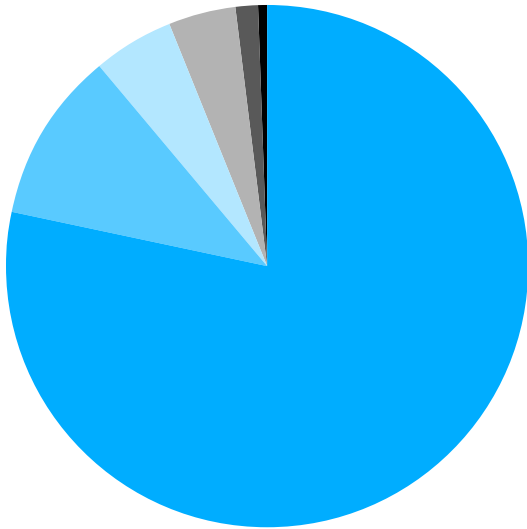
Because we understand and care about LGBT issues, Heartland Alliance works with a wide array of national, regional, and international organizations to push for visibility and protection for LGBT populations throughout the world, including involvement at the Organization for American States, the African Commission on Human and Peoples' Rights, and the United Nations Human Rights Committee. Gender and sexuality should never be reasons for violence or exclusion—Heartland Alliance is at the forefront of making that a reality in countries around the globe.

one more

Join us. Heartland Alliance is unwilling to allow anyone to be forgotten. The people we serve are in dire circumstances, but our solutions work because they are practical, compassionate, and effective. With your help, Heartland Alliance can continue to have lasting, critical impact on millions of lives.

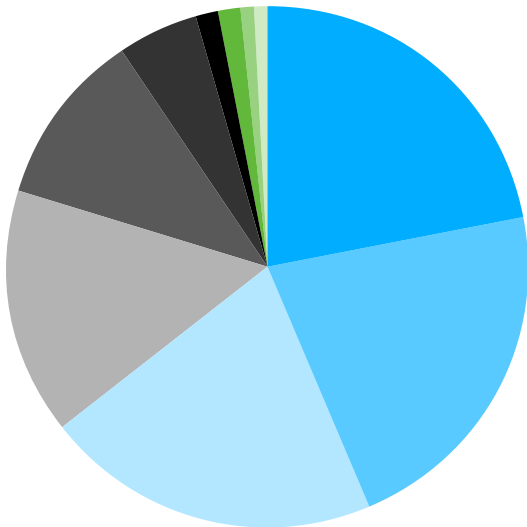
financial review

More than 90 cents of every dollar donated to Heartland Alliance goes directly to programs for the most vulnerable members of our community.



Total Income \$77,418,665

78.4%	Grants & contracts
10.7%	Contributions
5.0%	Rental & related revenue
4.1%	Program services & third-party revenue
1.4%	Miscellaneous income
0.4%	United Way



Total Expenses \$77,418,665

22.1%	Health care
21.7%	Housing services
20.6%	Social services for impoverished individuals & families
15.4%	International programs
10.8%	Administration
4.9%	Public policy programs
1.5%	Future program commitments
1.4%	Services to immigrants & refugees
0.9%	Fundraising
0.6%	Planning & communications

2011 contributions

\$500,000 +

ANONYMOUS*

Investing in the National Immigrant Justice Center; and a global network of supportive services for the lesbian, gay, bisexual, and transgender community.

THE ATLANTIC PHILANTHROPIES (USA) INC.*

Investing in the National Immigrant Justice Center.

GRETCHEN'S FUND

Investing in emergency care and protection services to respond to global crises resulting from disaster, conflict, or oppression.

UNITED WAY OF METROPOLITAN CHICAGO

Investing in financial stability, health and wellness, and crisis services for children.

\$100,000–499,999

ARCUS FOUNDATION*

Investing in a global network of supportive services for the lesbian, gay, bisexual, and transgender community

BANK OF AMERICA CHARITABLE FOUNDATION

Investing in solutions to poverty and injustice.

CHARLES STEWART MOTT FOUNDATION*

Investing in the Illinois Asset Building Group; and the National Transitional Jobs Network.

THE CHICAGO COMMUNITY FOUNDATION*

Investing in programs that help people secure jobs and become economically stable.

THE CHICAGO COMMUNITY TRUST*

Investing in homeless prevention services; health care coordination; the Midwest Harm Reduction Institute; and the Social IMPACT Research Center.

DIANE AND ROD DAMMEYER

Investing in solutions to poverty and injustice; and to health care reform efforts.

ELEANOR FOUNDATION*

Investing in an initiative to improve the economic stability of working women.

THE FORD FOUNDATION

Investing in the Illinois Asset Building Group; and the National Immigrant Justice Center.

FOUNDATION TO PROMOTE OPEN SOCIETY IN COLLABORATION WITH THE OPEN SOCIETY INSTITUTE

Investing in the National Immigrant Justice Center.

JAMES P. AND BRENDA S. GRUSECKI FAMILY FOUNDATION*

Investing in supportive services to help homeless families move to social and economic stability.

WILLIAM RANDOLPH HEARST FOUNDATION

Investing in services and stability for formerly homeless families.

THE JOYCE FOUNDATION*

Investing in the National Transitional Jobs Network; and the IMPACT Research Center.

LLOYD A. FRY FOUNDATION*

Investing in oral health care services for children of low-income families in Chicago.

OTHO S.A. SPRAGUE MEMORIAL INSTITUTE*

Investing in the Chicago Community Oral Health Forum.

* Includes payments on multi-year grants.

Heartland Alliance 2011 Annual Report

\$50,000–99,999

THE PARTNERSHIP FOR NEW COMMUNITIES*

Investing in energy efficiency training and transitional jobs programs.

POLK BROS. FOUNDATION

Investing in school-based health care; and the National Immigrant Justice Center.

PUBLIC INTEREST PROJECTS

Investing in the National Immigrant Justice Center.

JEANNE M. SULLIVAN

Investing in the National Immigrant Justice Center.

WOODS FUND OF CHICAGO

Investing in the Illinois Asset Building Group; and the From Poverty to Opportunity Campaign.

ALPHAWOOD FOUNDATION

Investing in the National Immigrant Justice Center.

BUTLER FAMILY FUND

Investing in the National Transitional Jobs Network.

THE ANNIE E. CASEY FOUNDATION, INC.

Investing in the National Transitional Jobs Network.

CHICAGO BAR FOUNDATION

Investing in the National Immigrant Justice Center.

CHICAGO TRIBUNE CHARITIES—

Holiday Campaign, a fund of The McCormick Foundation

Investing in homeless prevention services, and vocational training for refugees.

THE CROWN FAMILY

Investing in solutions to poverty and injustice; and in services and stability for formerly homeless families.

FRECHETTE FAMILY FOUNDATION

Investing in solutions to poverty and injustice.

GRAND VICTORIA FOUNDATION

Investing in advancing public policies that fit the needs of everyone.

HUGH F. HALVERSTADT AND R. CRAIG ENDICOTT AND THE HUGH F. HALVERSTADT DONOR ADVISED FUND OF THE COMMUNITY FOUNDATION OF MIDDLE TENNESSEE

Investing in comprehensive services for refugees resettling in Chicago.

JPMORGAN CHASE BANK, N.A.

Investing in workforce development services for low-income individuals.

THE LIBRA FOUNDATION

Investing in the National Immigrant Justice Center; and the From Poverty to Opportunity Campaign.

BARBARA G. MANILOW

Investing in solutions to poverty and injustice.

THE SIDLEY AUSTIN FOUNDATION

Investing in the National Immigrant Justice Center.

UNITED WAY OF SOUTHWEST MICHIGAN

Investing in programs that help people secure jobs and become economically stable.

Heartland Alliance 2011 Annual Report

\$25,000-49,999

HELEN BRACH FOUNDATION

Investing in solutions to poverty and injustice.

ELIZABETH MORSE GENIUS CHARITABLE TRUST

Investing in solutions to poverty and injustice.

LEONARD C. GOODMAN

Investing in solutions to poverty and injustice.

GREATER MILWAUKEE FOUNDATION, INC.

Investing in affordable and supportive housing so people living in poverty have a safe place to call home.

LEO S. GUTHMAN FUND

Investing in services and stability for formerly homeless families.

HENKEL FAMILY FOUNDATION

Investing in work in low-income communities in Mexico.

LINDY AND MIKE KEISER

Investing in solutions to poverty and injustice.

JEANNE AND DESMOND LAPLACE

Investing in solutions to poverty and injustice.

MCCORMICK FOUNDATION

Investing in the Social IMPACT Research Center.

PATTY AND ROB MOORE

Investing in solutions to poverty and injustice.

PRINCE CHARITABLE TRUSTS

Investing in quality health care services for people living in poverty.

FRANK F. QUINN

Investing in solutions to poverty and injustice.

THE RHOADES FOUNDATION

Investing in solutions to poverty and injustice.

SARA LEE FOUNDATION

Sara Lee Foundation was the Lead Corporate Sponsor of Heartland Alliance's Wealth and Wellness curriculum.

UNITED NATIONS VOLUNTARY FUND FOR VICTIMS OF TORTURE

Investing in the Marjorie Kovler Center.

\$10,000-24,999

ANONYMOUS (2)

Investing in solutions to poverty and injustice.

ADAMS STREET PARTNERS, LLC

Investing in solutions to poverty and injustice.

ADVOCATE ILLINOIS MASONIC MEDICAL CENTER

Investing in community health care for people who need quality, affordable care.

SUZANNE AND DAVID ARCH

Investing in solutions to poverty and injustice.

ROBIN AND TONY ARMOUR

Investing in solutions to poverty and injustice.

BAKER & MCKENZIE LLP

Investing in the National Immigrant Justice Center.

BANK OF AMERICA, N.A.

Investing in solutions to poverty and injustice.

VICKI AND GREG BEDNAR

Investing in solutions to poverty and injustice.

DAVID P. BERTEN

Investing in the National Immigrant Justice Center.

BLUE CROSS BLUE SHIELD OF ILLINOIS

Investing in solutions to poverty and injustice.

Heartland Alliance 2011 Annual Report

THE BOEING COMPANY CHARITABLE TRUST

Investing in solutions to poverty and injustice.

DEBORAH AND ALAN BRAXTON

Investing in solutions to poverty and injustice.

BUTLER RUBIN SALTARELLI & BOYD LLP

Investing in the National Immigrant Justice Center.

CARYLON FOUNDATION

Investing in a global women's network.

JACK E. AND MARGARET C. CAVENEY

Investing in solutions to poverty and injustice.

CHICAGO AREA FOUNDATION FOR LEGAL SERVICES

Investing in the National Immigrant Justice Center.

CHILDREN'S MEMORIAL HOSPITAL

Investing in community health care for people who need quality, affordable care.

JAMES CHIU

Investing in solutions to poverty and injustice.

RUTH A. COLBY AND DONALD M. DEFRANK

Investing in a global women's network.

A.G. COX CHARITABLE TRUST

Investing in solutions to poverty and injustice.

CUBS CARE, a fund of The McCormick Foundation

Investing in community health care for people who need quality, affordable care.

D & R FUND

Investing in solutions to poverty and injustice.

ERNST & YOUNG LLP

Investing in solutions to poverty and injustice.

EXELON CORPORATION

Investing in solutions to poverty and injustice; and in the National Immigrant Justice Center.

FIELD FOUNDATION OF ILLINOIS, INC.

Investing in community health care for people who need quality, affordable care.

FRANKEL FAMILY FOUNDATION

Investing in solutions to poverty and injustice.

GLOBAL IP LAW GROUP, LLC

Investing in the National Immigrant Justice Center.

AURELIA AND MORRIS GOLDBERG CHARITABLE TRUST

Investing in the Marjorie Kovler Center.

SCOTT L. GOODMAN

Investing in solutions to poverty and injustice.

THE GRAINGER FOUNDATION

Investing in solutions to poverty and injustice.

GREENBERG TRAUERIG LLP

Investing in the National Immigrant Justice Center.

N. LYNN HIESTAND

Investing in solutions to poverty and injustice.

HUGHES SOCOL PIERS RESNICK & DYM LTD.

Investing in the National Immigrant Justice Center.

IRVIN STERN FOUNDATION

Investing in the National Immigrant Justice Center.

JOHNSON & JOHNSON FAMILY OF COMPANIES

Investing in comprehensive health care services for people living in poverty.

JONES DAY

Investing in the National Immigrant Justice Center.

KATTEN MUCHIN ROSENMAN FOUNDATION, INC.

Investing in the National Immigrant Justice Center.

KIRKLAND & ELLIS FOUNDATION

Investing in the National Immigrant Justice Center.

THE LAKE COUNTY COMMUNITY FOUNDATION

Investing in the National Immigrant Justice Center.

LOCAL INITIATIVES SUPPORT CORPORATION

Investing in affordable and supportive housing so people living in poverty have a safe place to call home.

LOCKE LORD BISSELL & LIDDELL LLP

Investing in the National Immigrant Justice Center.

MAYER BROWN LLP

Investing in the National Immigrant Justice Center.

Heartland Alliance 2011 Annual Report

MB REAL ESTATE SERVICES, LLC

Investing in solutions to poverty and injustice.

SID L. MOHN AND MICHAEL TAPIA

Investing in solutions to poverty and injustice.

THE NORTHERN TRUST COMPANY

Investing in solutions to poverty and injustice.

ORAL HEALTH AMERICA

Investing in oral health care.

KAREN E. OTTO

Investing in solutions to poverty and injustice.

THE PRIVATEBANK AND TRUST COMPANY

Investing in solutions to poverty and injustice; and to affordable and supportive housing so people living in poverty have a safe place to call home.

RAVENSWOOD HEALTH CARE FOUNDATION*

Investing in school-based health care.

PATRICIA A. AND DAVID J. REBEY

Investing in solutions to poverty and injustice; and comprehensive health care services for people living in poverty.

REEDSMITH LLP

Investing in the National Immigrant Justice Center.

SARA LEE CORPORATION

Investing in solutions to poverty and injustice.

SEYFARTH SHAW LLP

Investing in the National Immigrant Justice Center.

SNR DENTON US LLP

Investing in the National Immigrant Justice Center.

LIZABETH G. SODE

Investing in infrastructure to support organizational growth and future opportunity.

U.S. BANCORP FOUNDATION

Investing in solutions to poverty and injustice.

THE WILLOW SPRINGS FOUNDATION

Investing in solutions to poverty and injustice.

WINSTON & STRAWN LLP

Investing in the National Immigrant Justice Center.

WM. WRIGLEY JR. COMPANY

Investing in the Chicago Community Oral Health Forum.

Heartland Alliance 2011 Annual Report

\$5,000 - 9,999

Anonymous (2)
AIDS Foundation of Chicago
Ellen S. Alberding and Kelly R. Welsh
The Allstate Foundation
American Electric Power
Baker & Daniels LLP
Barack Ferrazzano Kirschbaum
 Perlman & Nagelberg LLP
Francis Beidler Foundation
Keek L. and William T. Bielby
Bridgeview Bank Group
Henry Brown
Clifton Gunderson LLP
Colleen and David Cole
Consortium for Community Development
Kim M. Cysewski
Erika Dillon and Glenn D. Newman
Sue Elaine and David Edwards
Equal Justice Works
Daniel Erdman
Mary R. Fabri and David N. Goldberg
First Nonprofit Insurance Company
Foley & Lardner LLP
Susan Aiken Fortier and Steven E. Fortier
GO Airport Express
Mary E. and Michael N. Goodkind
Izabelle J. Gorczynski
Grippo & Elden LLP
John Hagenah Family Fund
The Herbert & Gertrude
 Halverstadt Foundation
Emily Hartzog
Meg and John Hesselmann
Elizabeth M. Higashi
Lee S. Hillman
Illinois Institute of Art—Chicago
Jenner & Block, LLP
Jewish Community Teen Foundation
Ann Mond Johnson and Pierce Johnson
Elizabeth Kepuraitis and Robert H. Tucker
Elaine H. Klemen and M. Cherif Bassiouni
Kroll Associates, Inc.

Latham & Watkins LLP
Suellen and Chip Long
Macquarie Group Foundation
Elise and Ron Magers
Marineau Family Foundation
Meg E. and Peter I. Mason
Jane T. and John C. McCarthy
McDermott Will & Emery LLP
McDonald's Corporation
Barbara McDowell and
 Gerald S. Hartman Foundation
Arthur R. Metz Fund (Globe Foundation)
Jennifer Miller and Bruce McPhee
Robert & Julie Montgomery Foundation
Navigant Consulting
Neal, Gerber & Eisenberg LLP
Shawn-Laree and Dan O'Neil
Kathe A. and William C. Pate
The Pierce Family Charitable Foundation
Public Interest Law Initiative
Michael Reese Health Trust
Lawrence S. Schaner
Stephanie Schweitzer
Diana C. Small and Douglas N. Dickson
Terri and Mark J. Sullivan
The Thorek Memorial Foundation
Thomas Thorne-Thomsen
Anne F. Tiesenga and Gale T. Landers
U.S. Bank
Martha VanHaitsma and Gustavo
Bamberger
W.W. Grainger, Inc.
The Warranty Group
Kristen Underhill Welch
 and Barclay C. Welch
Herbert C. Wenske Foundation
Western Union Foundation
Whirlpool Corporation
Mary G. Wilson
Kristen and William Woolfolk
Yeyita Inc.
Susan H. and Paul A. Zucker

\$2,500 - 4,999

Anonymous (2)
American Jewish World Service
Angelic Organics Learning Center, Inc.
Joseph A. Antolin
Applegate & Thorne-Thomsen P.C.
Aronberg Goldgehn
Barnes & Thornburg LLP
Kathy Berger and Louis Schorsch
Ann and Arnie Berlin
Joy Buddig
Robert G. Byron
Caterpillar Inc.
The Chicago Foundation for Women
Mary T. Chlebowski
Dennis W. Coatar
Linda T. Coberly
Mardge Cohen and Gordon Schiff
Coldwell Banker Residential Brokerage
Charitable Foundation
Peggy and John Collins
Combined Insurance Company
Eileen J. and William L. Conaghan
Amber Cooper
DLA Piper US LLP
Drinker Biddle & Reath LLP
Dykema Gossett
Cynthia Elsener and Marita Rhea
Elysian
Enterprise Holdings Foundation
Evangelical Lutheran Church in America
Law Offices of Susan Fortino-Brown
Fragomen, Del Rey, Bernsen & Loewy LLP
Julia E. Getzels and Benjamin L. Fine
Kathryn and Bruce Gleghorn—
 Honeywell Intl Corp.
Grant Thornton LLP
Richard H. Grossi
Groupon
Hugh F. Halverstadt and R. Craig Endicott
Harris Bank
Hazieli Ministry
Hektoen Institute of Medicine Women's

Heartland Alliance 2011 Annual Report

\$1,000 - 2,499

HIV Research Coalition
John B. Jenkins
Ray J. Koenig III
LexisNexis
Tammy and Daniel Lezotte
Lovell & Whyte
Madison Construction
Theodore W. Michalke and
Thomas A. Marano
Julianne Sawyer Migely
Penelope A. and Gerry M. Miller
Minsky, McCormick & Hallagan, P.C.
Jo and Art Moore
Judith Neafsey and Terrence J. Conway
Frank S. Oddo
Julie L. and Randall L. Oyler
Paul, Hastings, Janofsky & Walker LLP
Polk Family Charitable Fund
Polly and Kenneth Rattner
Sandy J. Rebitzer
Lee Ann Russo
Ryndak & Suri, LLP
Schiff Hardin Foundation
Richard D. Shoop
Nancy A. Simonson
Skadden, Arps, Slate, Meagher & Flom LLP
Beth and Adam Steele
Kevin A. Sterling
Troutman Sanders LLP
Wallin/Gomez Architects, Ltd.
Philip R. Warth, Jr.
WLS Television, Inc.
Zulkie Partners LLC

Anonymous (2)
Abbott Laboratories Fund
Richard Abrahamson
Laura L. Adams
Geri F. and James W. Ahlberg
Shubhada Ahya
American Immigration Lawyers
Association
Robert C. Anderson
Bennett P. Applegate
Joan B. Ashmore
Robert D. Avery
Anne M. Badgley
Alisa Ruth and Steven Baron
Barry Roofing, Inc.
Mary H. and Michael J. Barton, Jr.
Elizabeth and Greg Blaine
Blistex Inc.
Jennifer R. Breuer
Warren J. Brodine and Mark A. Rhein
Candace B. Broecker
Kara J. Bruce
Gabrielle M. Buckley
Patricia Anne Burke
Joseph Byrd
Greg Cameron and Greg Thompson
Suzy and Russell Campbell
Edith F. Canter and Fred A. Wellisch
Martha Casazza
Roxanna and James Catlett
Donald B. Chae
Clifford Law Offices, P.C.
Steven Cohen
Joan E. Coogan
Peg and Andrew Cooper
Raymond E. Crossman and Christopher
B. Dillehay
Mary Kay Czerwiec and Cynthia A. Homan
Becky L. Davenport and Jack S. Jensen
Jacki and John Davidoff
Debora de Hoyos and Walter Carlson
Deloitte
DIFFA/Chicago
Melanie S. and Robert B. Douglas

The Richard H. Driehaus
Charitable Lead Trust
Daniel Du Bay and Dominic Raso
Samuel C. Dudley, Jr.
Natasha and Zach Egan
Eimer Stahl Klevorn & Solberg
Vivien Eisenberg and Samuel Dorevitch
Araceli Esquivel
Euromonitor International, Inc.
Mary Lynn Everson
Jennifer and Mike Faron
Terry Yale Feiertag
Alison Fethke
Mary and E.J. Finneran
Patricia Flavin
Sarah and Fred Flosi
David S. Foster
Franczek Radelet P.C.
Jody and William Frank
FTI Consulting Inc.
Elizabeth and Andrew Geer
Jill A. Geltmaker
Gerald Norton Memorial Corporation
R. Scott Gill and Bill Stegeman
Beverley Gilmore and Peter Keseric
David Grazman
Robert P. Griffiths
Robert S. Grossinger
Gruen Galleries
Guptill Family Foundation
Mary F. Haas
The Habitat Company
Lisa M. Haufschild
Health and Medicine
Policy Research Group
Heartland Human Care Services
Brian Heckler
Tracy Heilman and Ray Macika
Carrie M. Heinonen
Kirsten and Marc Hewitt
Holabird & Root LLC
Lisa M. Hultquist
Jennifer M. and Todd L. Hume
Illinois Tool Works Inc.

Heartland Alliance 2011 Annual Report

Andrea J. Ingram
JPMorgan Chase Foundation
Nancy and Jack Katz
Elizabeth Kepuraitis and Bob Tucker
James Kershner and Mark Pflieger
Barbara S. Kirschner
Kiwanis Club of San Diego
Thomas R. Klein and David Gitomer
Randolph T. Kohler and Scott M. Gordon
Kozacky & Weitzel, P.C.
Lewis Lampiris and Donald Hunter
Elaine R. Leavenworth
Betsy and Jon Leonard
Irving & Roberta Lewis
Charitable Foundation
Cara M. and Lorry A. Lichtenstein
Loyola Academy
Rod Lubeznik
Christopher D. Lueking
The John D. & Catherine T.
MacArthur Foundation
Magellan Development Group LLC
Debra K. and Martin J. Marcus
Marx Foundation
Debbie and Mark McCann
Susan M. McCowin and Randall S. Rapp
Margaret and Michael McDermott
Mary Kay McDermott and
Duane F. Sigelko
Kelly McGrail and Jeff Goulette
Susan and Donald Metivier
Kristin Milles
Colleen D. and Howard W. Mitchell

Morgan, Lewis & Bockius LLP
Judith M. and Thomas C. Muntz
New Frontiers Foundation
New Prospect Foundation
North Shore Community Bank
& Trust Company
Daniel J. O'Connor
Gail and Sean O'Connor
Kathy and Thomas O'Donnell
Onasis Contractors, Inc.
Kathleen M. Osberger
Younghee J. Ottley
Lois and Gene Pavalon
Cathy A. Peterson
Colette O. Pollock
Quattro FPO Solutions
Gwenn A. Rausch
Roberto Requejo
Margaret E. Rice and James A. Morsch
Diana Rich
Janice E. Rodgers
Jill and Ron Rohde
Ruth E. Ross
Joan Rothenberg
Saks Fifth Avenue
Peyman Salehi
Barbara A. and Jerry M. Santangelo
Schiff Hardin LLP
The John & Kathleen
Schreiber Foundation
Paul Schwab, Jr. and Stephen Warner
Nancy P. and John B. Schwemm
SEIU Healthcare Illinois/Indiana

Sharp-Pucci Foundation
Erin Shencopp
John Snow, Inc.
Natalie J. Spears
Stephen S. Stabile
Ronna Stamm and Paul Lehman
(The Goodworks Fund)
State Bank of India
Steptoe & Johnson LLP
Sandra M. and Guy F. Summers
Swedish Covenant Hospital
Anthony C. Tapia
Wade Thomson
Elizabeth Beidler Tisdahl Foundation
Lynn and Michael Todman
Erika B. and Robert D. Toon
TransUnion LLC
Lori and Ian Tuffield
Anne and John Tuohy
Michael Turansick
Alice M. Tybout and Brian Sterthal
Unilever United States Foundation, Inc.
Unity Church In Chicago
Molly A. Vanderloo
David I. Wales
Walsh Construction Company
Andrew T. Ward
Barbara A. Warren
Pamela and Melville Washburn
Mary Ann and Benjamin Weprin
Denise M. and Patrick S. White
Wright Benefit Strategies, Inc.
Dwight Yackley

Heartland Alliance 2011 Annual Report

Local, State, and Federal Fundors

Chicago Department of Aviation
Chicago Department of Environment
Chicago Department of Family
and Support Services
Chicago Department of Finance
Chicago Department of Housing
and Economic Development
Chicago Department of Public Health
Chicago Housing Authority
Chicago Jobs Council
Cook County Juvenile Justice
Illinois Attorney General
Illinois Criminal Justice
Information Authority
Illinois Department of Children
and Family Services
Illinois Department of Commerce
and Economic Opportunity
Illinois Department of Corrections
Illinois Department of Healthcare
and Family Services
Illinois Department of Human Services
Illinois Department of Public Health
Illinois Housing Development Authority
Illinois Secretary of State

Illinois State Board of Education
Michigan Works
Michigan Department of Energy,
Labor & Economic Growth Milwaukee
County, Department of
Health and Human Services
Milwaukee Department of
City Development
Ryan White Care Act through the
University of Illinois-Chicago
U.S. Agency for International Development
(USAID)
U.S. Bureau of the Census
U.S. Department of Agriculture
U.S. Department of Health and
Human Services
U.S. Department of Housing
and Urban Development
U.S. Department of Justice
U.S. Department of Labor
U.S. Department of State
United Nations
Wisconsin Housing and
Economic Development Authority

leadership

Executive Leadership Team

JOSEPH A. ANTOLÍN

Vice President and Executive Director,
Heartland Human Care Services, Inc.

MARY H. BARTON

Vice President,
Donor & Community Relations
Heartland Alliance

KAREN BATIA

Vice President and Executive Director,
Heartland Health Outreach, Inc.

MICHAEL GOLDBERG

Vice President and Executive Director,
Heartland Housing, Inc.

SID L. MOHN

President
Heartland Alliance

GWENN RAUSCH

Executive Director,
Heartland International Health Center

BRIAN REGISTE

Chief Financial Officer and Vice President,
Heartland Alliance

LIZABETH G. SODE

Executive Director, Strategic Services
Heartland Alliance

Board Of Directors Heartland Alliance

CHAIR

Scott L. Goodman
Sterling Bay Companies

VICE CHAIR

Lynn C. Todman
Adler School of Professional Psychology

TREASURER

Karen E. Otto
Witt/Kieffer

SECRETARY

Glenn D. Newman
Exelon Corporation

Shubhada Ahya
*Northwestern University School
of Medicine*

Alan R. Braxton
Macquarie Capital Advisors

Linda T. Coberly
Winston & Strawn LLP

Ruth A. Colby
Silver Cross Hospital

Araceli Esquivel
Health Care Service Corporation

Julia E. Getzels
The Art Institute of Chicago

Elaine H. Klemen

Ray J. Koenig III
Clark Hill PLC

Christopher D. Lueking
Latham & Watkins LLP

Wendy A. Manning
The Boeing Company

Theodore W. Michalke
NeuStrategy, Inc.

Arthur Moore
Moore Investment Properties LLC

Kathe A. Pate

Frank F. Quinn
UBS Financial Services, Inc.

Sandy J. Rebitzer

Marita Rhea
Bank of America

Ryan S. Ruskin
The Ruskin Group

Steve E. Scholl
Allstate Insurance Company

Jeanne M. Sullivan

Guy F. Summers
Farrell Group, LLC

Heartland Alliance 2011 Annual Report

Robert H. Tucker

Lori S. Tuffield
The PrivateBank

Giovani Twigge
IDEXX Laboratories, Inc.

Andrew T. Ward
The Boeing Company

Thomas O. Weeks
CMK Development Chicago LLC

Barclay C. Welch
Ansonia Properties, LLC

Paul A. Zucker
City Real Estate Incorporated

BOARD LIAISONS

Mary L. Ahern
Heartland Human Care Services
representative

Daniel V. Lezotte
APT, Inc.
Heartland Housing representative

Roberto Requejo
The Federal Reserve Bank of Chicago
Heartland Housing representative

Mary G. Wilson
SNR Denton US LLP
Heartland Health Outreach representative

AUXILIARY BOARD AND LEADERSHIP COUNCIL LIAISONS

Susan R. Fortino
Law Offices of Susan Fortino-Brown
NIJC Leadership Council representative

Jason Miller
Homewood-Flossmoor High School
Junior Board representative

Jesse H. Ruiz
Drinker Biddle & Reath LLP
Mexico-U.S. Binational Leadership
Council

Nancy A. Simonson
Accenture
Women's Board representative

Beth Steele
PDI Ninth House
Women's Board representative

Heartland Alliance 2011 Annual Report

Heartland Housing

CHAIR

Robert P. Griffiths
American Chartered Bank

VICE CHAIR

Kevin A. Sterling
The Sterling Law Office LLC

TREASURER

Ruth A. Wuorenma
Neighborhood Capital Institute

SECRETARY

Roberto Requejo
The Federal Reserve Bank of Chicago

Adnan Assad
Popular Community Bank

Robert G. Byron
Blue Vista Capital Partners, LLC

Jennifer L. Zellner Faron
P & W Partners, LLC

Sol Flores
La Casa Norte

Robert S. Grossinger
Enterprise Community Partners, Inc.

Kristine Jurmu
Bank of America

Daniel V. Lezotte
APT, Inc.

Robin Snyderman
Metropolitan Planning Council

Benjamin J. Weprin
AJ Capital Partners LLC

Paul A. Zucker
City Real Estate Incorporated

Heartland Health Outreach

CHAIR

Kim M. Cysewski
W.W. Grainger, Inc.

VICE CHAIR

Elizabeth M. Higashi
Higashi Advisors

TREASURER

Thomas R. Klein
Klein & Slotton Medical Associates

SECRETARY

Julianne Sawyier Migely
Thomson Reuters

Funmi Adeboje
Corn Products International, Inc.

Jennifer R. Breuer
DrinkerBiddle & Reath LLP

Amy Brierly
Extra Mile Public Relations, LLC

Samuel C. Dudley, Jr.
University of Illinois at Chicago

Douglas R. Elliott
JPMorgan

John P. Flaherty
Northwestern University, Feinberg School of Medicine

Natasha D. Goburdhun
American Hospital Association

Richard H. Grossi
Kensium LLC

Khoa X. Ho
Ariel Investments, LLC

Michael A. Humphrey
Sg2

Lewis N. Lampiris
American Dental Association

Bill Lasche
Bill Lasche, Ltd. Interior Design

Carlos E. Paret
Abbott Molecular

Cathy A. Peterson
Peterson Healthcare Consulting, Inc.

Joshua Rafsky
Jenner & Block LLP

David J. Rebey
Virco Lab, Inc., Division of Johnson & Johnson

Ruth E. Ross
North Shore Health Systems

Stephen S. Stabile

Mark J. Sullivan
Sullivan Publishing

Mary G. Wilson
SNR Denton US LLP

Diane Wolf

Heartland Alliance 2011 Annual Report

Heartland Human Care Services

CHAIR

Mary L. Ahern

VICE CHAIR

Molly Vanderloo
*International Fellowship of
Christians and Jews*

TREASURER

Andrea J. Ingram
Museum of Science and Industry

SECRETARY

Eileen J. Conaghan

Robin P. Armour
AMD Capital, LLC

Steven L. Baron
Mandell Menkes LLC

Donald B. Chae

John O.A. Davidoff
Davidoff Communications, LLC

Sandra J. Dechter
The Northern Trust Company

Diana N. Derige
W.K. Kellogg Foundation

Ted Grady
J&L Catering

Robert G. Hann
GO Airport Express

Lisa M. Haufschild
Haufschild Associates, Inc.

Linda R. Haynes
The Emergency Fund

Carrie M. Heinonen

John C. McCarthy
GO Airport Express

Therese M. McGuire
The Northern Trust Company

Nataka Moore
Adler School of Professional Psychology

Gregory A. Thompson
UnitedHealthcare

Anne F. Tiesenga
DMX

Joseph A. Vasquez, Jr.
Schiff Hardin LLP

Heartland International Health Center

An affiliate of Heartland Alliance

CHAIR

Steve Rosemurgy

VICE CHAIR

Francelyn Perez

TREASURER

Kathy Sprattling

SECRETARY

Doris Gray

Scott Baum
Mary Bookman
Elisabeth Houston
Mary Hunter
Jocelyn Johnson
Maureen Sanderson
Heidi Spielmaker
Stephen S. Stabile
Elizabeth Tarlov

Heartland Alliance 2011 Annual Report

HEARTLAND ALLIANCE FOR
HUMAN NEEDS & HUMAN RIGHTS

208 South LaSalle Street, Suite 1818

Chicago, IL 60604

312.660.1300

www.heartlandalliance.org

Editor

Emily Blum,

Director of Communications

Writer

Carl Vogel

Design

Kym Abrams Design

Photography

Shane Welch [Midnight, 2AM and 5 AM]

© 2011 Heartland Alliance for
Human Needs & Human Rights